

Sterile filter casing

Application:

- The ST type sterile filter casings are suitable for receiving sterile filter cartridges (HEPA filters) between filter grades H11 and H14*.
- The sterile filter casing contains of three basic components, each component has several versions so many combinations can be assembled.

Materials:

- Casing made of sheet steel, powder coated RAL 9010,
- Diffusers made of sheet steel, powder-coated RAL 9010

Option:

- Casing and diffuser made of stainless steel (1.4301)

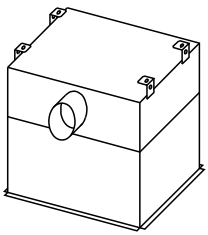


Filter casing:

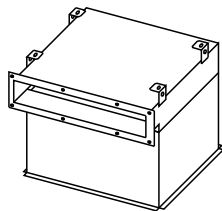
The main unit of the ST type sterile filter element is the filter casing in which the filter panel located. The filter casing has the mounting elements required for accurate and sealed placement of the filter panel. There is a removable bridge at the bottom of the casing for fixing the filter panel and the central screw. There are 4 hanging tabs on the top of the box.

Five filter housing shapes are available depending on the type of air supply:

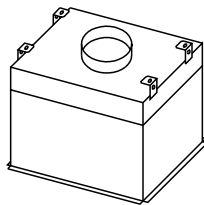
Variants:



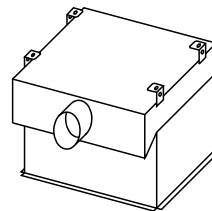
STA
Side entry
circular spigot,
ceiling installation



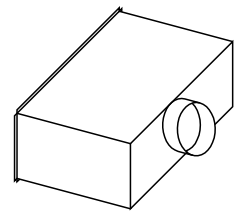
STB
Side entry
rectangular spigot,
ceiling installation



STC
Top entry
circular spigot,
ceiling installatio



STL
Side entry
circular spigot,
ceiling installati

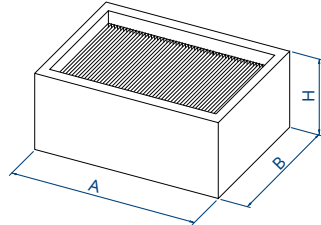


STO
Horizontal entry
circular spigot,
wall installation

Commercially available standard circular cross-section air ducts can be connected directly to the STA, STC, STL and STO filter casing. Rectangular flat flange air ducts can be connected the STB type. Upon request you can order other dimensions.

* When using a filter insert H14 (aluminum-framed, gel-sealed), the cleanliness of the filter box is ISO7, grade 'C' according to EN ISO 14644-1.

Filter element:



The selection of the ST system is based on the sizes of the filter element. You can find in the table the most common filter sizes and their nominal air flow.

The material of the frame, the choice of the size, the type of the sealing system and filter quality can be varied. Use the manufacturer's instructions for the exact selection. The pressure drop of clean filter element would be 250 Pa at the given air flow in the table and values in the table.

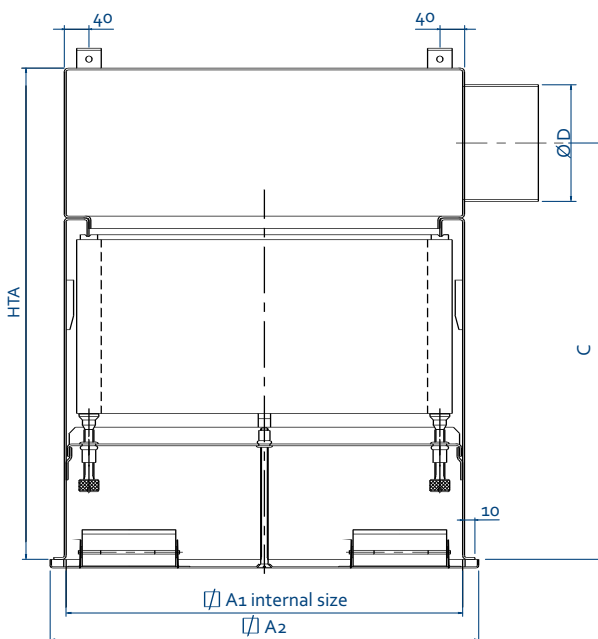
You can order non-standard sizes.

Filter size AxBxH	Nominal air flow	Weight
[mm]	[m ³ /h]	~[kg]
345x345x78	320	1,8
345x345x150	590	4,6
435x435x78	540	2,0
435x435x150	1025	5,2
535x535x78	850	3,1
535x535x150	1585	7,2
575x575x78	970	3,4
575x575x150	1850	8,2
610x305x78*	540	2,5
610x305x150*	980	5,6
610x610x78	1100	3,5
610x610x150	2100	8,6

*to STO type

Type:

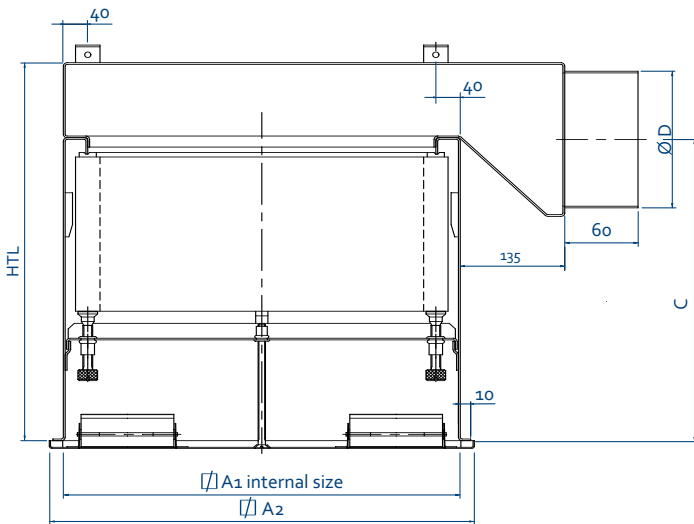
STA -Filter casing with horizontal circular connection



Filter size AxBxH	D	A ₁	A ₂	HTA	C	Weight
[mm]	[mm]	[mm]	[mm]	[mm]	[mm]	~[kg]
345x345x78	124	368	400	375	300	7,4
	159			410	318	8,0
345x345x150	159	368	400	480	388	9,4
	199			520	408	10,2
435x435x78	159	458	500	410	318	10,1
	199			450	338	11,0
435x435x150	199	458	500	520	408	12,7
	249			570	433	13,9
535x535x78	199	558	595	450	338	13,5
	249			500	363	15,0
535x535x150	249	558	595	570	433	17,0
	314			635	465	18,9
575x575x78	199	598	625	450	338	14,5
	249			500	363	16,1
575x575x150	249	598	625	570	433	18,3
	314			635	465	20,3
610x610x78	199	633	660	450	338	15,4
	249			500	363	17,0
610x610x150	249	633	660	570	433	19,4
	314			635	465	21,5

1. Dimensions [mm] and weight [kg] of STA type.

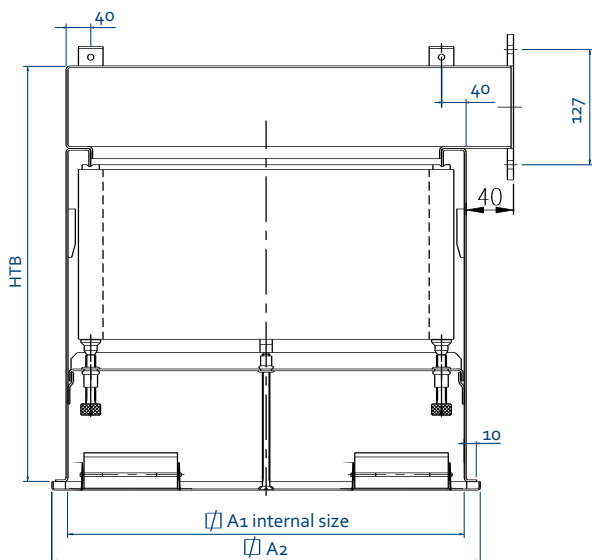
Type:
STL - Filter casing with horizontal circular connection



Filter size AxBxH	D	A1	A2	HTL	C	Weight
[mm]	[mm]	[mm]	[mm]	[mm]	[mm]	~[kg]
345x345x78	124	368	400	325	250	6,4
	159			325	233	6,4
345x345x150	159			395	303	7,7
	199			395	283	7,7
435x435x78	159	458	500	325	233	8,0
	199			325	213	8,0
435x435x150	199			395	283	9,7
	249			435	298	10,7
535x535x78	199	558	595	325	213	9,8
	249			365	228	11,0
535x535x150	249			435	298	13,1
	314			500	330	15,0
575x575x78	199	598	625	325	213	10,6
	249			365	228	11,8
575x575x150	249			435	298	14,0
	314			500	330	16,1
610x610x78	199	633	660	325	213	11,2
	249			365	228	12,5
610x610x150	249			435	298	14,9
	314			500	330	17,0

2. Dimensions [mm] and weight [kg] of STL type.

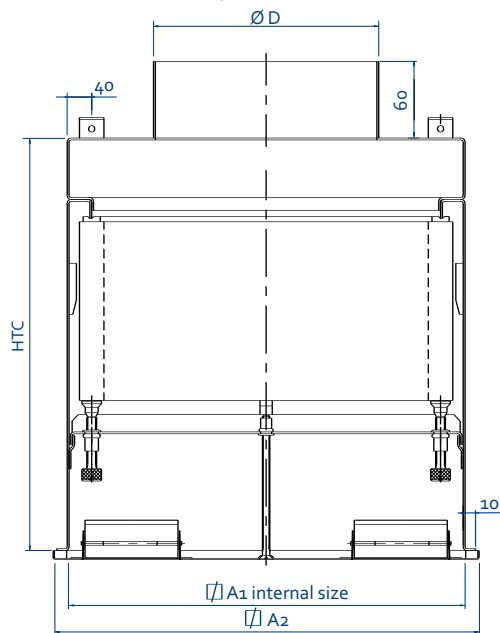
Typ:
STB - Filter casing with horizontal rectangular connection



Filter size AxBxH	A1	A2	HTB	Weight
[mm]	[mm]	[mm]	[mm]	~[kg]
345x345x78	368	400	325	6,4
			325	6,4
345x345x150			395	7,7
			395	7,7
435x435x78	458	500	325	8,0
			325	8,0
435x435x150			395	9,7
			395	9,7
535x535x78	558	595	325	9,8
			325	9,8
535x535x150			395	11,9
			395	11,9
575x575x78	598	625	325	10,6
			325	10,6
575x575x150			395	12,8
			395	12,8
610x610x78	633	660	325	11,2
			325	11,2
610x610x150			395	13,5
			395	13,5

3. Dimensions [mm] and weight [kg] of STB type.

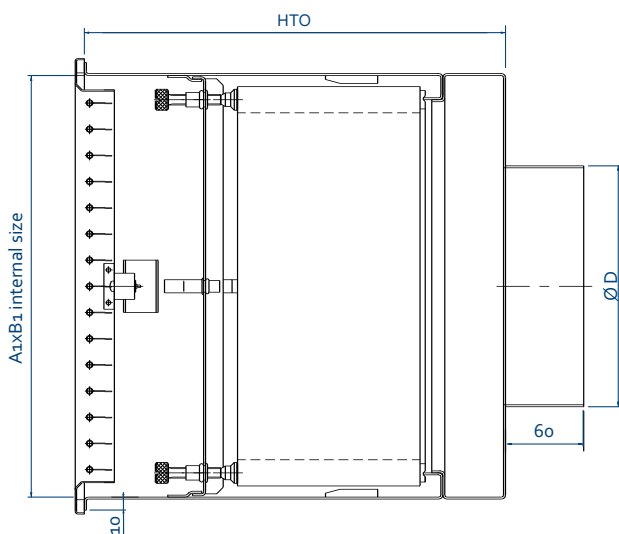
Type:
STC - Filter casing with vertical circular connection



Filter size AxBxH	D	A1	A2	HTC	Weight
[mm]	[mm]	[mm]	[mm]	[mm]	~[kg]
345x345x78	124	368	400	325	6,4
	159			325	6,4
345x345x150	159	368	400	395	7,7
	199			395	7,7
435x435x78	159	458	500	325	8,0
	199			325	8,0
435x435x150	199	458	500	395	9,7
	249			395	9,7
535x535x78	199	558	595	325	9,8
	249			325	9,8
535x535x150	249	558	595	395	11,9
	314			395	11,9
575x575x78	199	598	625	325	10,6
	249			325	10,6
575x575x150	249	598	625	395	12,8
	314			395	12,8
610x610x78	199	633	660	325	11,2
	249			325	11,2
610x610x150	249	633	660	395	13,5
	314			395	13,5

4. Dimensions [mm] and weight [kg] of STC type.

Type:
STO - Filter casing with horizontal circular connection



Filter size AxBxH	D	A1xB1	HTO	Weight
[mm]	[mm]	[mm]	[mm]	~[kg]
305x610x78	159	322x627	305	7,9
	199		305	8,2
305x610x150	199	322x627	375	9,6
	249		375	10,2

5. Dimensions [mm] and weight [kg] of STO type.

Air diffusers and grilles:

WE offer these types to our sterile filter casing:

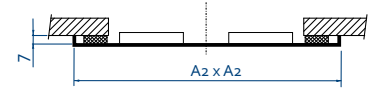
- RBN-HO swirl diffuser with plastic baffles
- RPN-HO square diffuser with perforated
- PBN-HO swirl diffuser with fix blades
- DPB-HO swirl diffuser with design front
- FDD-HO square diffuser

For STO type we offer the following types:

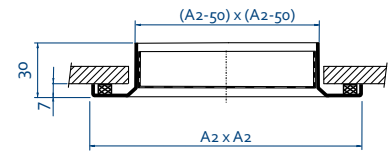
- CNG-HO air grilles with adjustable blades,
- CNRD-HO decorative grilles

Order key:

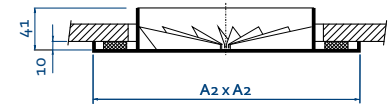
- STL 535 x 535 x 78 - Ø200 + PBN-HO RAL colour.



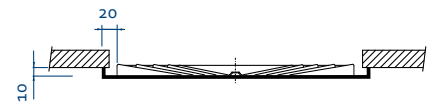
RBN-HO
Swirl diffuser



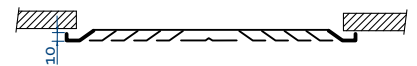
RPN-HO
Perforated diffuser



PBN-HO
Swirl diffuser



DPB-HO
Swirl diffuser



FDD-HO
Square diffuser



CNG-HO
Air grilles



CNRD-HO
Decorative grilles